

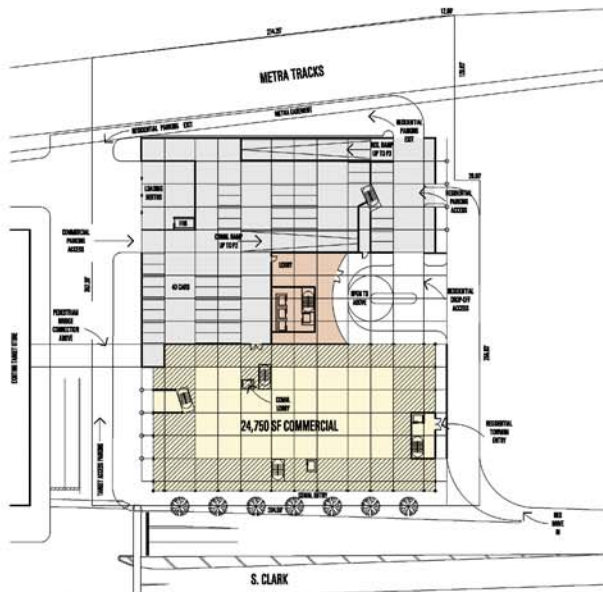
*The Curve*  
Chicago, Illinois



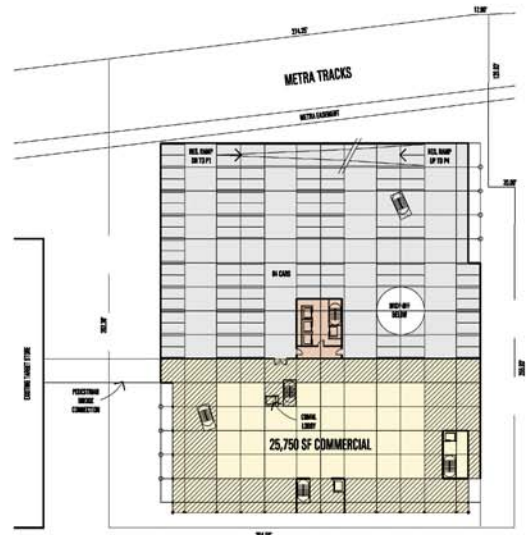
The residential development of a 110,000 sf South Loop site will include 600 dwellings above a 50,000 sf base consisting of retail and parking. The Curve is intended to be a major addition to the Printer's Row neighborhood and unlike several other residential towers planned for the area, The Curve will offer both condominium and townhouse style residences. The roof of the commercial / parking base will function as an amenity deck for the residences, offering recreational areas that will include outside space, community rooms and a pool. The sweeping curve of the tower acts as a large scale urban gesture, maximizing dramatic views from within while giving the development its signature image and name.

The five story commercial base reinforces the appropriate urban edge along the Clark Street corridor, while creating the raised open courtyard which becomes the unique gathering point of the project.





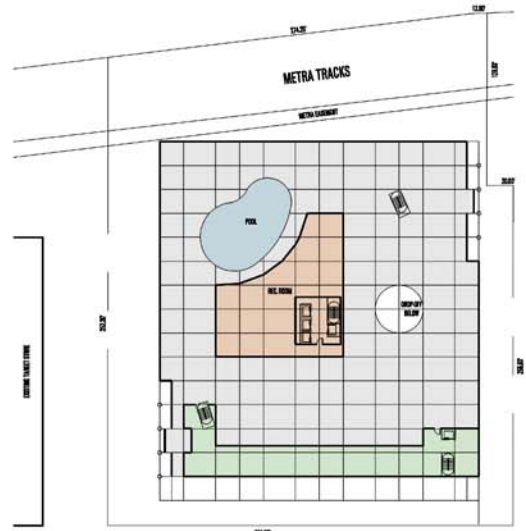
FIRST FLOOR



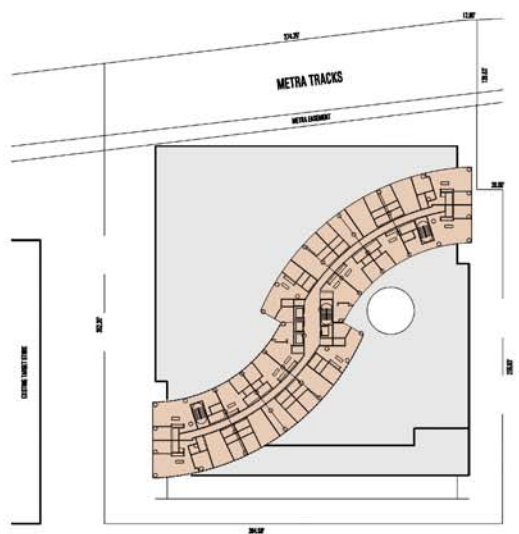
SECOND FLOOR



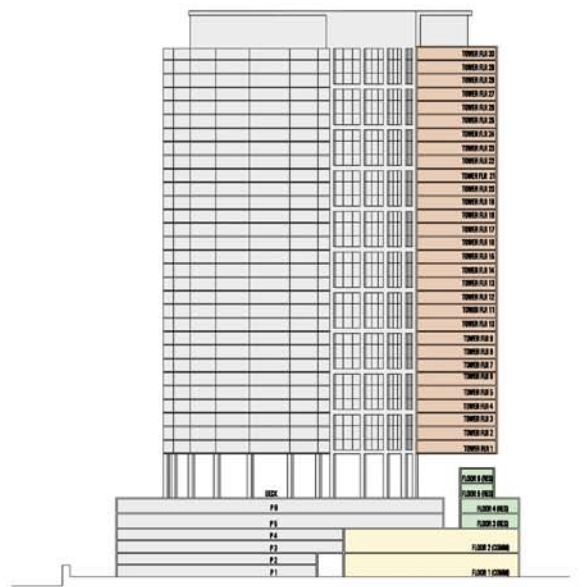
THIRD FLOOR



FIFTH FLOOR



TOWER



SECTION